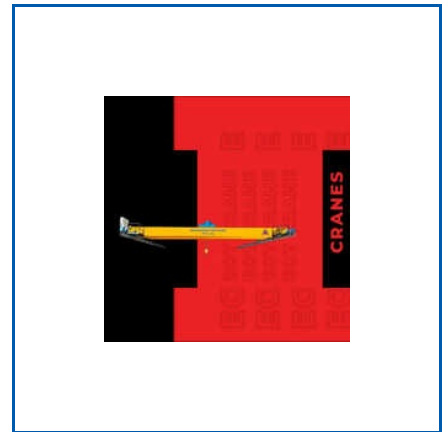




# EOT CRANE

Best Destination For Quality Lovers

10 Ton Single Girder EOT Crane, 10 Ton Single Girder Gantry Crane, 10 Ton Underslung Eot Crane, 100 Ton Double Girder Gantry Crane, 15 Ton Double Girder EOT Crane, 15 Ton Eot Crane, 1600-96 Line Polishing Machine, 20 Ton Double Girder Eot Crane, etc.



**3 TON SINGLE GIRDER EOT CRANE 15 TON DOUBLE GIRDER EOT CRANE 25 TON DOUBLE GIRDER EOT CRANE**



## About Us

Shri Bhagwati Machines Pvt. Ltd. is an Indian company with more than 25 years of experience, advanced technological capabilities and expertise in engineering and manufacturing across various sectors. The company specializes in developing high-quality machines for industrial and urban infrastructure development projects. Our company prides itself on its end-to-end capabilities and state-of-the-art manufacturing facility, aiming to establish a global footprint in India and beyond. We are known in the market as a leading manufacturer, supplier, and exporter of EOT Crane, EX- Series Fiber Laser Cutting Machine, Line Polishing Machine, Gantry Crane, Multi Cutter Machine, and more.

Our aim is to become a world-class organization and leader in every aspect of its business. Innovation is a driving force behind our success, and the company applies it across all areas of its operations. The spirit of innovation motivates us to aggressively grow businesses by accessing global markets, delivering products and services of uncompromising quality and integrity consistent to honour our brand, and image. For our quality-assured products and dedication, we have received many rewards and recognition. We are also an ISO-certified organization.



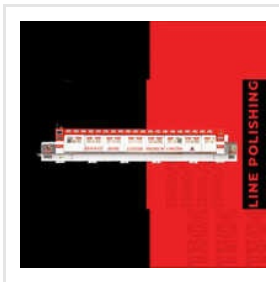
## Key Facts

<b>Nature of Business</b>	Manufacturer
<b>No of Staff</b>	500
<b>Year of Establishment</b>	1995
<b>OEM Service Provided</b>	No

## Our Products



**1600-96 Line Polishing Machine**



**LPM 1300-206 Line Polishing Machine**



**EX-3015 Fiber Laser Cutting Machine**



**EX-4020 Fiber Laser Cutting Machine**



**EX-6020 Fiber Laser Cutting Machine**



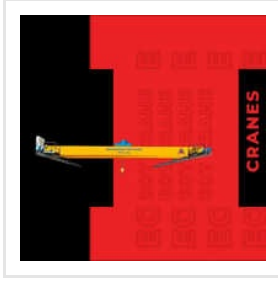
**EX-2515 Fiber Laser Cutting Machine**



**LPM 1300-166 Line Polishing Machine**



**50 Ton Double Girder Eot Crane**



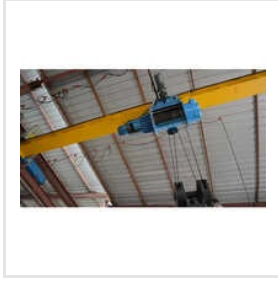
**5 Ton Single Girder EOT Crane**



**10 Ton Underslung Eot Crane**



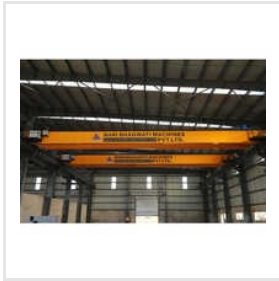
**15 Ton Eot Crane**



**20 Ton Double Girder Eot Crane**



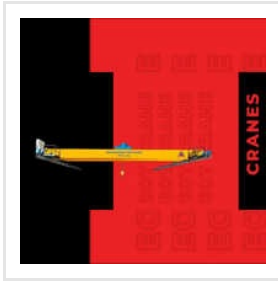
**EX-1515 Fiber Laser Cutting Machine**



**30 Ton Double Girder Eot Crane**



**10 Ton Single Girder EOT Crane**



**Single Girder Eot Cranes**



**SHRI BHAGWATI MACHINES PVT. LTD.**

+918854903444



ADDRESS

**G-178/179/179A/180, Riico  
Industrial Area, Parbatpura -  
Makhupura Extension, Ajmer,  
Rajasthan, India (305002).**



EMAIL

**sbmpl\_ajmer@yahoo.co.in**



MOBILE

**+918854903444**



WEBSITE

**www.shribhahwatimachines**

KEY PERSONNEL  
**SBMPL**  
(MANAGER)

DESIGNED AND  
DEVELOPED BY

**trade  
india.**